

United Arab Emirates  
Ministry of Education



الإمارات العربية المتحدة  
وزارة التربية والتعليم

# Unit (9) Revision Booklet

- Name: \_\_\_\_\_.
- Grade: \_\_\_\_\_.
- Done by: Ms. Maryam Saeed  
(English teacher).



# Reading (1): Cafés in different places

Read and answer the next activity:

## The Jungle Café

This café is in a town. The café is inside a building, but it looks like a jungle! You can hear jungle birds and insects. You can see some jungle animals and some fish. There is a menu for adults and a menu for children. The food is delicious!

## The Tree House Café

This café is in the countryside. The café is outside. In fact, it's in a tree house! To get to the café, you walk up some stairs, then you climb up a ladder. You can hold the railing while you climb. You can hear a musician playing the guitar. You can sit and look up at the trees or down at the ground. The café is open in summer and closed in winter.

Read and tick (✓) or (×)

1. Jungle café is in a countryside (    )
2. Jungle café is inside a building (    )
3. You can hear music in Jungle café (    )
4. There are menus for adults and children (    )
5. Food is bad in Jungle café (    )
6. The Tree House Café is in countryside (    )
7. The Tree House Café is inside a building (    )
8. The Tree House Café has ladder and stairs (    )
9. The Tree House Café is open in winter (    )
10. The Tree House Café is closed in winter (    )

I can read about cafés?   

# Reading (2): Cafés in different places

Read and answer the next activity:

## The Jungle Café

This café is in a town. The café is inside a building, but it looks like a jungle! You can hear jungle birds and insects. You can see some jungle animals and some fish. There is a menu for adults and a menu for children. The food is delicious!

## The Tree House Café

This café is in the countryside. The café is outside. In fact, it's in a tree house! To get to the café, you walk up some stairs, then you climb up a ladder. You can hold the railing while you climb. You can hear a musician playing the guitar. You can sit and look up at the trees or down at the ground. The café is open in summer and closed in winter.

Choose which café each sentence is about

a) The Jungle Café

b) The Tree House Café

1. It is in a town (     )
2. It is outside (     )
3. It is in a countryside (     )
4. It is inside the building (     )
5. You can hear jungle birds and insects sounds (     )
6. You can hear a musician playing guitar (     )
7. You can climb up a ladder to get there (     )
8. You can see jungle animals and fish (     )
9. You can look up at the trees or down (     )

I can read and match the sentences cafés?



# Reading (3): Opposites

Read and answer the next activity:

When I say day, I say night

When I say black, I say white

When I go left, I go right

When I say yes, I say no

When I say stop! I say go!

When I sign high, I sing low

When I'm lost, I am found.

When I'm up, I am down

When I smile, I will frown

When I'm weak, I am strong

When I'm right, I am wrong

Read and write the opposites of the following words:

1. Black X \_\_\_\_\_

2. High X \_\_\_\_\_

3. Stop X \_\_\_\_\_

4. Up X \_\_\_\_\_

5. Left X \_\_\_\_\_

6. Frown X \_\_\_\_\_

7. Wrong X \_\_\_\_\_

8. Day X \_\_\_\_\_

9. No X \_\_\_\_\_

10. Found X \_\_\_\_\_

11. Strong X \_\_\_\_\_

I can find the opposites



## Writing (1): Inside and outside cities

Write the missing letters:

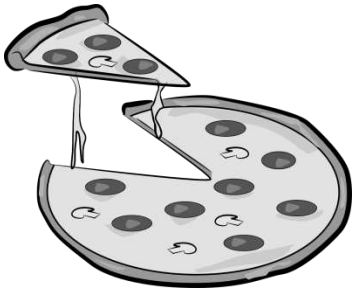
___ity	country ___ide	skyscra ___er	___elicopter
safe ___y bel___	h___spi ___al	swimmin___ po___l	___ ___opping cen___re
lib___ary	Ca___e	st ___ ___rs	ladde ___
a ___bula ___ce	Sh___p	pa___ ___	___ouse
ju___gle	ins___de	ou___side	m___nu
c___ k___	mark___t	m___se ___m	ch___ ___r
pi___za	ice ___ream	c___p	t___ ___

I can spell the words



# Writing (2): Home, sweet home

Look and write the missing letters:



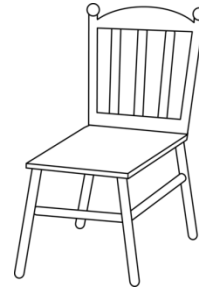
pi \_\_\_\_ a



t \_\_\_\_



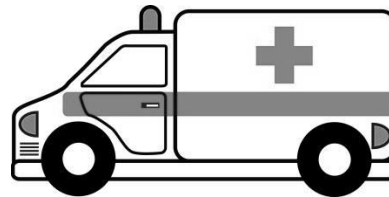
s \_\_\_\_yscrapers



\_\_\_\_ air



sho \_\_\_\_ping  
Center



a \_\_\_\_ bulance

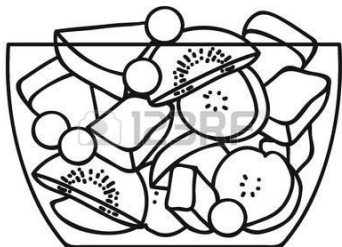
Look and write the missing letters:



Sh \_\_\_\_ p



count \_\_\_\_ ysi \_\_\_\_ e



Fruit \_\_\_\_ ala \_\_\_\_



\_\_\_\_ elico \_\_\_\_ ter



ho \_\_\_\_ pit \_\_\_\_ l



\_\_\_\_ \_\_\_\_ side

I can spell the words?



**Writing (4): Write sentences about the pictures.**



**Example:**

- 1) This is a hospital.
- 2) The doctor works in a hospital.
- 3) I go to hospital when I'm sick.



- 1) \_\_\_\_\_
- 2) \_\_\_\_\_
- 3) \_\_\_\_\_

**I can write sentences?**



# Writing (4): Write sentences about the pictures.



1)

---

2)

---

3)

---



1)

---

2)

---

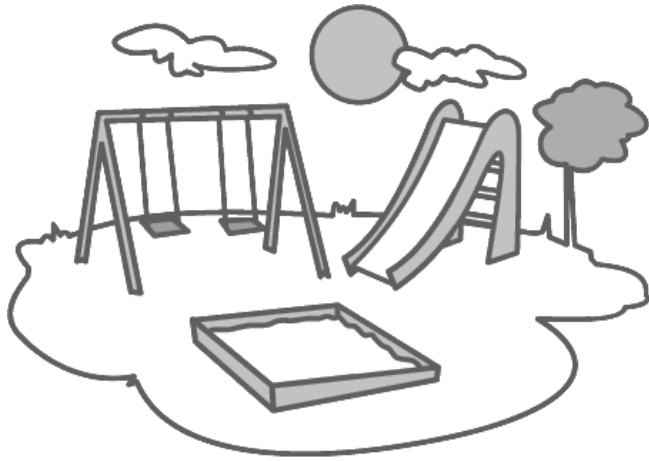
3)

---

I can write sentences?



# Writing (4): Write sentences about the pictures.



1)

---

2)

---

3)

---



1)

---

2)

---

3)

---

I can write sentences?

