

Please encourage the students to use the tips below as you practice with them.

Part 1 Speaking Exam tip(s)!

1. Please answer using full sentences [e.g. **What's this?**
"Pen" ❌ "It's a pen." ✅].
2. Speak loudly.
3. Don't be shy.
4. Ask the teacher to say the question again if you did not hear the first time.
5. Try to answer **all** the questions the teacher asks about the picture (s).

Part 2 Speaking Exam tip(s)!

1. Please answer using full sentences [e.g. **How old are you?**
"Six" ❌ "I'm six. / I'm six years old." ✅]
2. Speak loudly.
3. Don't be shy.
4. Ask the teacher to say the question again if you did not hear the first time.
5. Try to answer **all** the questions the teacher asks about you.

Speaking Part 1 Version 1

Please note: In Part 1, you should ask a maximum of four questions.

Part 1 should not last longer than 1 minute.

Teacher's Script:

Teacher: Good morning/afternoon.

In this first part, I'm going to show you a picture and ask you some questions.

The teacher can choose four of the questions below.

Show student Source 1.

	Question
1	Pic. 1 How many computers can you see?
2	Pic. 1 Where is the green bag?
3	Pic. 1 What can you see on the wall?
4	Pic. 1 How many pencils are there?
5	Pic. 1 Where are the pencils?
6	Pic. 2 What colours are the chairs?
7	Pic. 2 Where is the pencil?
8	Pic. 2 How many crayons are there?
9	Pic. 2 What colours are the notebooks?
10	Pic. 2 Where is the clock?

Speaking Part 1 Version 2

Please note: In Part 1, you should ask a maximum of four questions.

Part 1 should not last longer than 1 minute.

Teacher's Script:

Teacher: Good morning/afternoon.

In this first part, I'm going to show you a picture and ask you some questions.

The teacher can choose four of the questions below.

Show student Source 2.

	Question
1	How many people can you see?
2	What do the family do to have fun?
3	What colour is the baby's book?
4	What can the girl do?
5	How many pencils are on the table?
6	How many tables are there?
7	How many chairs are there?
8	Who is wearing glasses?
9	Where is the boy?
10	How many grown-ups can you see?

Speaking Part 2

Please note: In Part 2, you should ask a maximum of four questions.

Part 2 should not last longer than 1 minute.

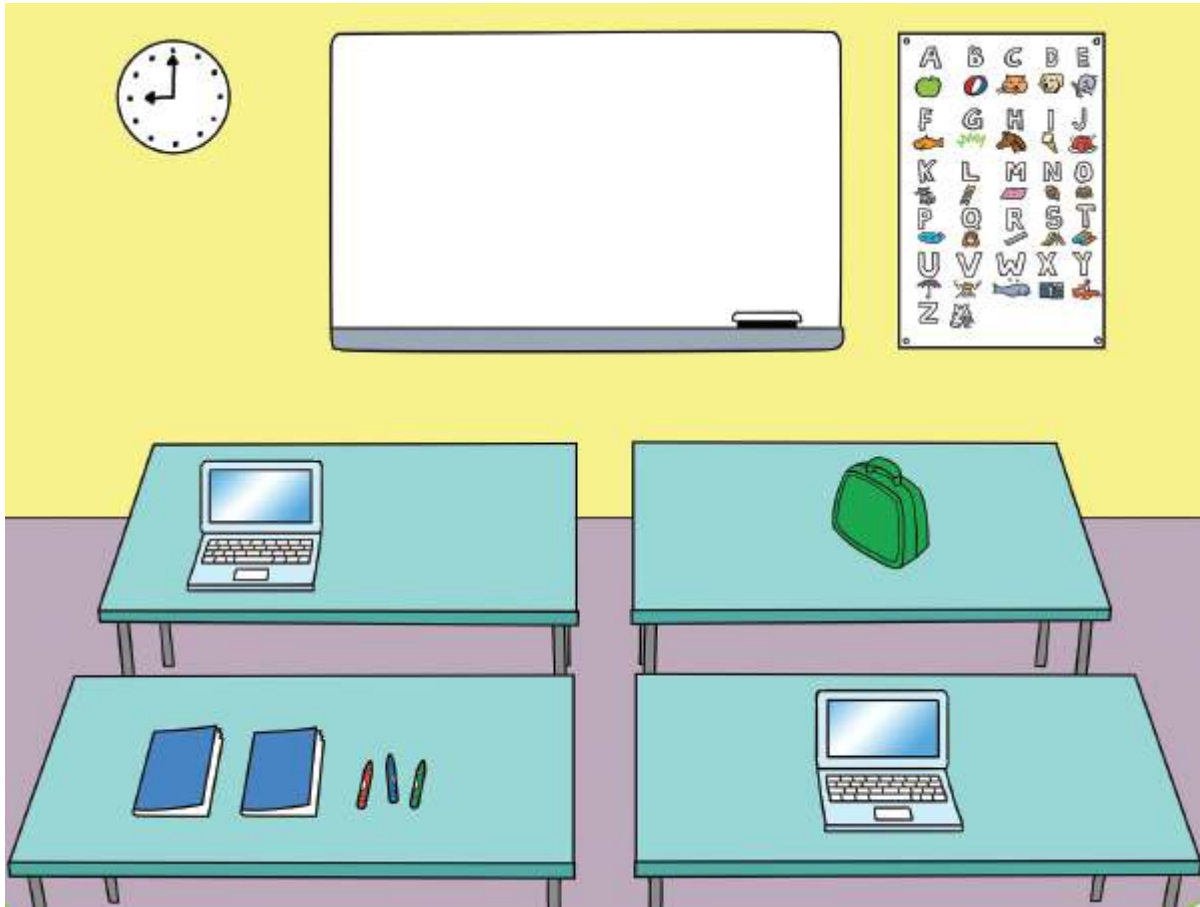
Teacher's Script:

Teacher: Now, in this second part, I'm going to ask you some questions about yourself.

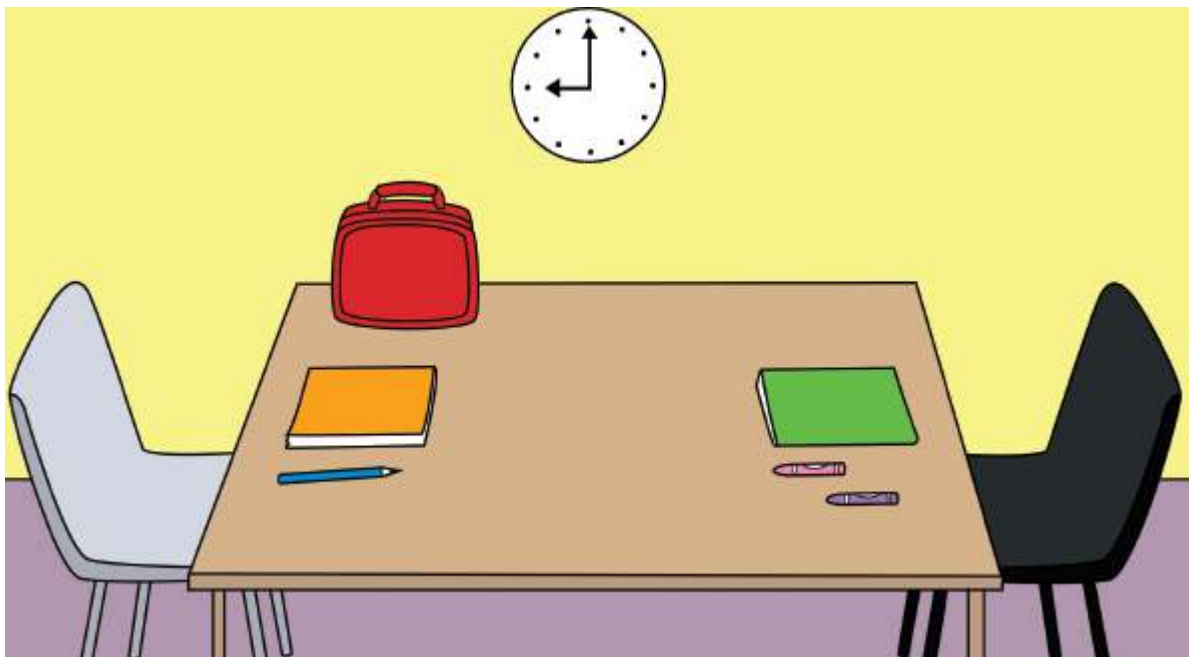
The teacher can choose four of the questions below.

	Question
1	Can you spell your name?
2	How old are you?
3	How do you get to school?
4	What do you do at school?
5	How do you go to school?
6	What's your favourite colour?
7	What do you eat for breakfast?
8	How many people are there in your family?
9	What does your family do together?
10	Is your family big or small?
11	What does your father / mother eat for breakfast?
12	What can you see in this room?
13	What games can you play?
14	Who are your friends?
15	How do you help your family?

1



2





Speaking Rubric

	Communicative success	Range and accuracy of language	Pronunciation	Fluency
	<ul style="list-style-type: none"> Questions answered Support given from examiner 	<ul style="list-style-type: none"> Utterance – words, phrases or sentences Grammar and vocabulary: range and accuracy 	<ul style="list-style-type: none"> Clarity of phonemes, syllables, words 	<ul style="list-style-type: none"> Mid-response hesitation/repetition/ pace of speech
4	<ul style="list-style-type: none"> Answers all questions clearly and promptly. Does not need the examiner to repeat or support them through back-up questions [apart from possibly 1 or 2 misunderstandings which are quickly fixed]. 	<ul style="list-style-type: none"> Uses sentences/ multi-word phrases for at least half their answers. Uses a range of vocabulary to give accurate answers. 	<ul style="list-style-type: none"> Pronunciation is sufficiently clear to understand in any context. Word stress is accurate throughout, with examples of contracted forms in phrases (e.g. "It's..."). 	<ul style="list-style-type: none"> Mostly answers in full sentences/phrases No hesitation when answering with a sentence or phrase (except maybe 1 or 2 isolated examples).
3	<ul style="list-style-type: none"> Answer most questions clearly and promptly, 2 or 3 can't be answered even with support/back-up questioning. Needs support from the examiner a few times, through some repetition and rephrasing (as a result of unresponsiveness or inappropriate responses). 	<ul style="list-style-type: none"> Uses more than one-word answers on 1 or 2 occasions. Uses appropriate vocabulary for most answers. 	<ul style="list-style-type: none"> Most answers are clear enough to be understood but one or two hard to understand. Most phonemes pronounced clearly, except for non-Arabic ones (e.g. 'p') Some inappropriate stress patterns for specific words/phrases. 	<ul style="list-style-type: none"> May not generally answer in full sentences/phrases Some hesitations when answering - particularly with a sentence or phrase - but generally doesn't affect communication.
2	<ul style="list-style-type: none"> Answers about half the questions adequately, perhaps with some delay. Needs support from the examiner for most of the questions, through some repetition and rephrasing (as a result of unresponsiveness or inappropriate responses). 	<ul style="list-style-type: none"> All one-word answers. Limited vocabulary – repeated or inaccurate words in most answers. 	<ul style="list-style-type: none"> Pronunciation means answers are routinely difficult to understand. Many inaccuracies in pronouncing phonemes and/or word stress. 	<ul style="list-style-type: none"> Responses – particularly those with more than one word – generally require patience due to slow/interrupted delivery.
1	<ul style="list-style-type: none"> Can only answer 1 or 2 questions adequately, even with support, repetition and back up questions from the teacher. 	<ul style="list-style-type: none"> Insufficient language given to show any evidence for this (apart from responses to the most basic personal questions). 	<ul style="list-style-type: none"> Finds it difficult to pronounce any words in English accurately (apart from responses to the most basic personal questions). 	<ul style="list-style-type: none"> Insufficient communication to show evidence of the above features.
0	Non-assessed: Student absent, evidence of cheating or nothing of meaning communicated.			